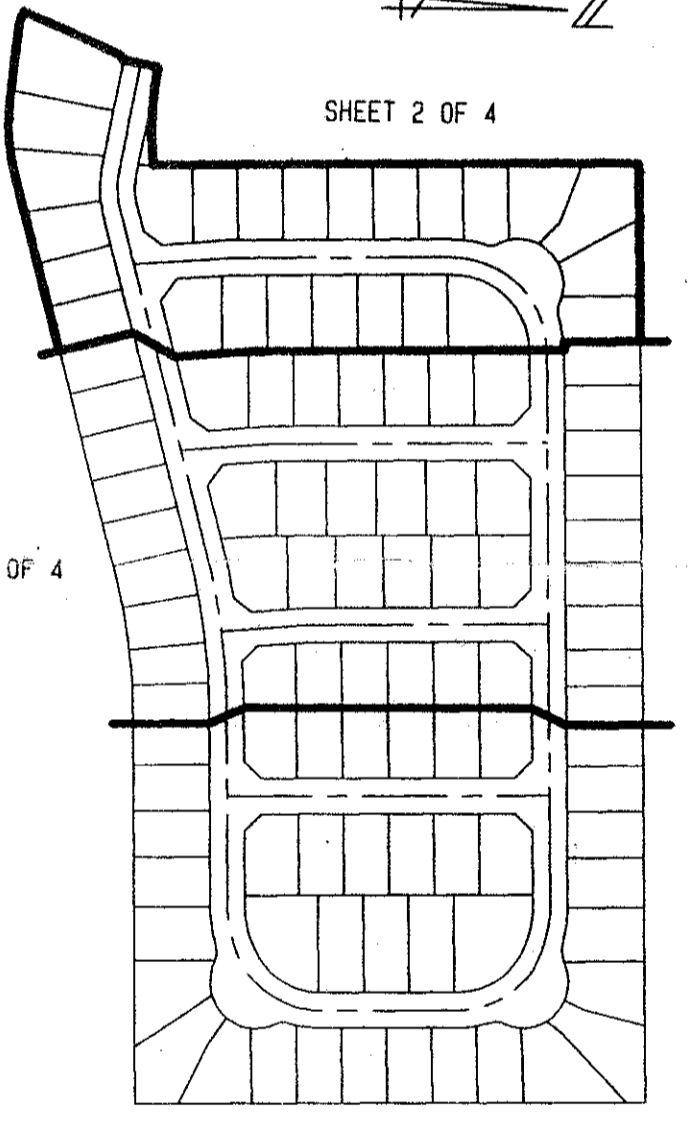
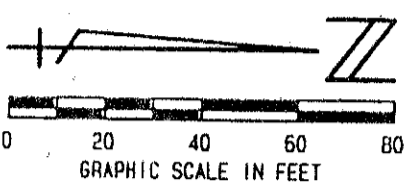


# WINSTON TRAILS PARCEL SIX

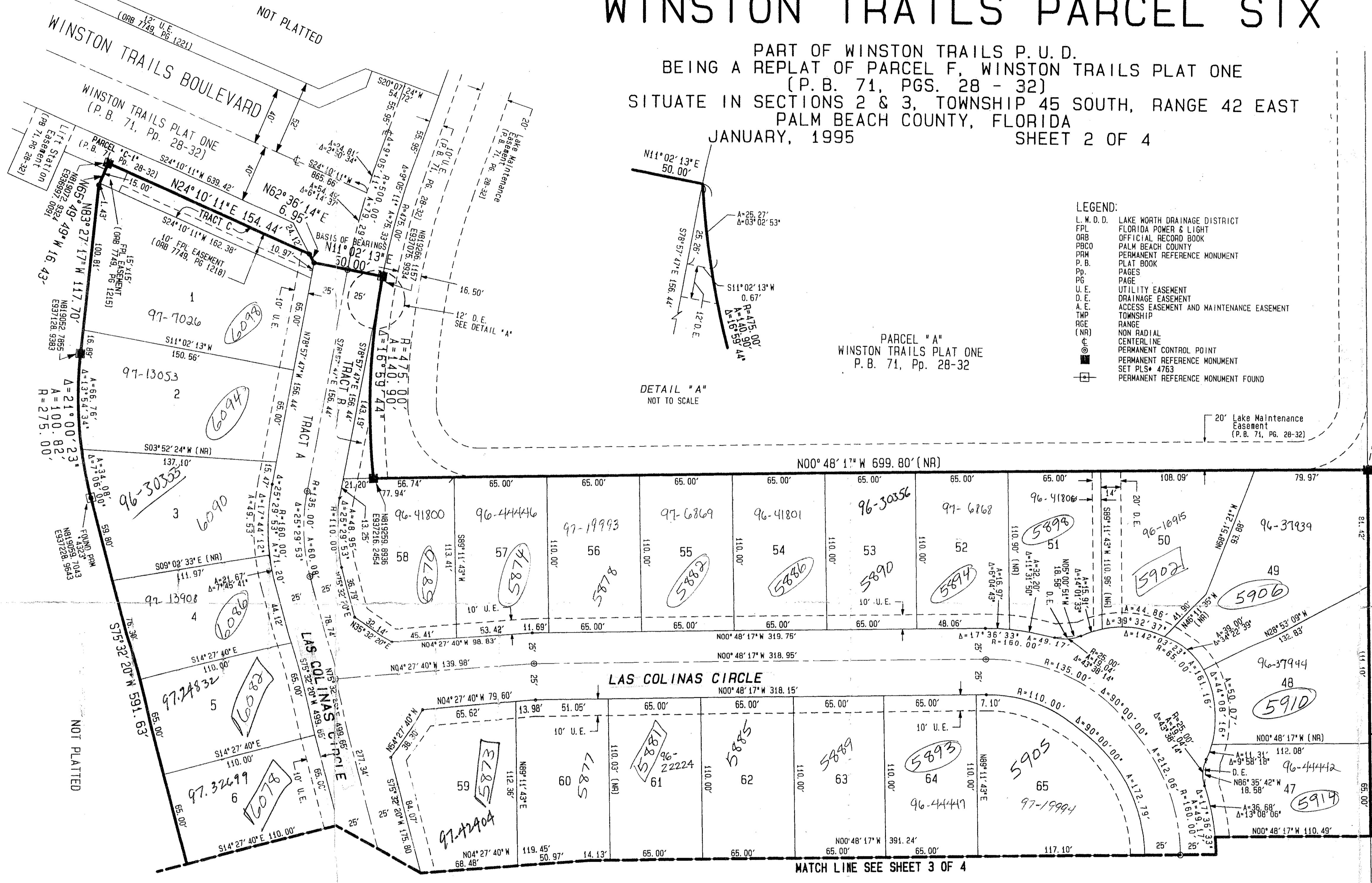
PART OF WINSTON TRAILS P. U. D.  
BEING A REPLAT OF PARCEL F, WINSTON TRAILS PLAT ONE  
(P. B. 71, PGS. 28 - 32)  
SITUATE IN SECTIONS 2 & 3, TOWNSHIP 45 SOUTH, RANGE 42 EAST  
PALM BEACH COUNTY, FLORIDA  
JANUARY, 1995  
SHEET 2 OF 4

STATE OF FLORIDA  
COUNTY OF PALM BEACH  
THIS PLAT WAS FILED FOR  
RECORD  
THIS \_\_\_\_\_ DAY OF \_\_\_\_\_  
AD, 1995 AND DULY RECORDED.  
IN PLAT BOOK \_\_\_\_\_ ON PAGES  
\_\_\_\_\_ AND \_\_\_\_\_  
DOROTHY H. WILKEN, CLERK  
BY: \_\_\_\_\_ D. C.

CIRCUIT COURT SEAL

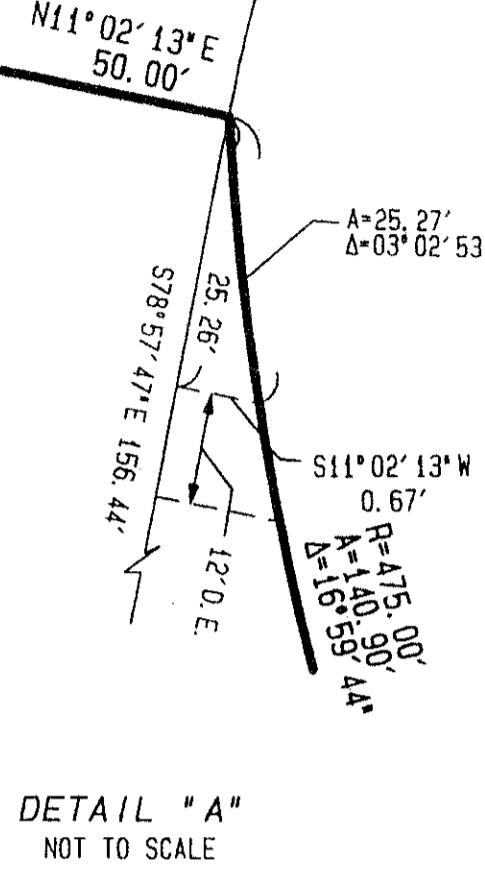


SHEET INDEX  
(NOT TO SCALE)



- LEGEND:**
- L. W. D. D. LAKE WORTH DRAINAGE DISTRICT
  - FPL FLORIDA POWER & LIGHT
  - ORB OFFICIAL RECORD BOOK
  - PBCO PALM BEACH COUNTY
  - PRM PERMANENT REFERENCE MONUMENT
  - P. B. PLAT BOOK
  - Pp. PAGES
  - PG. PAGE
  - U. E. UTILITY EASEMENT
  - D. E. DRAINAGE EASEMENT
  - A. E. ACCESS EASEMENT AND MAINTENANCE EASEMENT
  - TWP. TOWNSHIP
  - RGE. RANGE
  - NR. NON RADIAL
  - CL. CENTER LINE
  - PC. PERMANENT CONTROL POINT
  - PRM. PERMANENT REFERENCE MONUMENT
  - SET PLS. 4763 PERMANENT REFERENCE MONUMENT FOUND

PARCEL "A"  
WINSTON TRAILS PLAT ONE  
P. B. 71, Pp. 28-32



DETAIL "A"  
NOT TO SCALE

**MORTGAGEE'S CONSENT**

STATE OF FLORIDA )  
COUNTY OF PALM BEACH )

MORGAN GUARANTY TRUST COMPANY OF NEW YORK, AS TRUSTEE OF THE COMMINGLED PENSION TRUST FUND (MULTI-MARKET SPECIAL INVESTMENT FUND I) OF MORGAN GUARANTY TRUST COMPANY OF NEW YORK; AS TRUSTEE OF THE MULTI-MARKET SPECIAL INVESTMENT TRUST FUND OF MORGAN GUARANTY TRUST COMPANY OF NEW YORK; HEREBY CERTIFIES THAT IT IS A HOLDER OF A MORTGAGE UPON THE PROPERTY HEREON DESCRIBED AND DOES HEREBY JOIN IN AND CONSENT TO THE DEDICATION OF THE LAND DESCRIBED IN SAID DEDICATION BY THE OWNERS THEREOF AND AGREES THAT ITS MORTGAGE WHICH IS RECORDED IN OFFICIAL RECORD BOOK 9025 AT PAGE 1705 OF THE PUBLIC RECORDS OF PALM BEACH COUNTY, FLORIDA, SHALL BE SUBORDINATED TO THE DEDICATION SHOWN HEREON.

IN WITNESS WHEREOF, THE SAID CORPORATION HAS CAUSED THESE PRESENTS TO BE SIGNED BY ITS \_\_\_\_\_ AND ITS CORPORATE SEAL TO BE AFFIXED HERETO BY AND WITH THE AUTHORITY OF ITS BOARD OF DIRECTORS, THIS \_\_\_\_\_ DAY OF \_\_\_\_\_, 1995.

WITNESS: \_\_\_\_\_ BY: \_\_\_\_\_  
MORGAN GUARANTY TRUST COMPANY OF NEW YORK AS TRUSTEE  
ROBERT STONE SR. VICE PRESIDENT

**ACKNOWLEDGEMENT**

STATE OF FLORIDA )  
COUNTY OF PALM BEACH )

BEFORE ME PERSONALLY APPEARED RONALD G. HODGE, II WHO IS PERSONALLY KNOWN TO ME, OR HAS PRODUCED \_\_\_\_\_ AS IDENTIFICATION, AND WHO EXECUTED THE FOREGOING INSTRUMENT AS \_\_\_\_\_ OF MORGAN GUARANTY TRUST COMPANY OF NEW YORK, AS TRUSTEE OF THE COMMINGLED PENSION TRUST FUND (MULTI-MARKET SPECIAL INVESTMENT FUND I) OF MORGAN GUARANTY TRUST COMPANY OF NEW YORK, AS TRUSTEE OF THE MULTI-MARKET SPECIAL INVESTMENT TRUST FUND OF MORGAN GUARANTY TRUST COMPANY OF NEW YORK, AND SEVERALLY ACKNOWLEDGED TO AND BEFORE ME THAT HE EXECUTED SUCH INSTRUMENT AS SUCH OFFICER OF SAID CORPORATION, AND THAT THE SEAL AFFIXED TO THE FOREGOING INSTRUMENT IS THE CORPORATE SEAL OF SAID CORPORATION AND THAT IT WAS AFFIXED TO SAID INSTRUMENT BY DUE AND REGULAR CORPORATE AUTHORITY, AND THAT SAID INSTRUMENT IS THE FREE ACT AND DEED OF SAID CORPORATION.

WITNESS MY HAND AND OFFICIAL SEAL THIS \_\_\_\_\_ DAY OF \_\_\_\_\_, 1995.

MY COMMISSION EXPIRES: \_\_\_\_\_ DATE \_\_\_\_\_ NOTARY PUBLIC

**MORTGAGEE'S CONSENT**

STATE OF ILLINOIS )  
COUNTY OF COOK )

BOJER LAND INVESTORS, L.P., A DELAWARE LIMITED PARTNERSHIP, HEREBY CERTIFIES THAT IT IS A HOLDER OF A MORTGAGE UPON THE PROPERTY HEREON DESCRIBED AND DOES HEREBY JOIN IN AND CONSENT TO THE DEDICATION OF THE LAND DESCRIBED IN SAID DEDICATION BY THE OWNERS THEREOF AND AGREES THAT ITS MORTGAGE WHICH IS RECORDED IN OFFICIAL RECORD BOOK 0243 AT PAGE 304 OF THE PUBLIC RECORDS OF PALM BEACH COUNTY, FLORIDA, SHALL BE SUBORDINATED TO THE DEDICATION SHOWN HEREON.

BOJER LAND HOLDINGS, INC. AN ILLINOIS CORPORATION, AS GENERAL PARTNER OF BOJER LAND INVESTORS, L.P., A DELAWARE LIMITED PARTNERSHIP HAS CAUSED THESE PRESENTS TO BE SIGNED BY ITS \_\_\_\_\_ VICE PRESIDENT AND ITS CORPORATE SEAL TO BE AFFIXED HERETO BY AND WITH THE AUTHORITY OF ITS BOARD OF DIRECTORS, THIS \_\_\_\_\_ DAY OF \_\_\_\_\_, 1995.

WITNESS: \_\_\_\_\_ BY: \_\_\_\_\_  
BOJER LAND HOLDINGS, INC. VICE PRESIDENT  
STEVE SCHWABERHARDT

WITNESS: \_\_\_\_\_ BY: \_\_\_\_\_  
LARRY M. CHANESS  
VICE PRESIDENT, BOJER LAND HOLDINGS, INC. AN ILLINOIS CORPORATION, AUTHORIZED TO DO BUSINESS IN THE STATE OF FLORIDA

SEAL BOJER LAND HOLDINGS, INC.  
SEAL MORGAN GUARANTY TRUST COMPANY OF NEW YORK  
SEAL NOTARY PUBLIC

**ACKNOWLEDGEMENT**

STATE OF ILLINOIS )  
COUNTY OF COOK )

BEFORE ME PERSONALLY APPEARED LARRY M. Chaness WHO IS PERSONALLY KNOWN TO ME, OR HAS PRODUCED \_\_\_\_\_ AS IDENTIFICATION, AND WHO EXECUTED THE FOREGOING INSTRUMENT AS \_\_\_\_\_ OF BOJER LAND INVESTORS, L.P., A DELAWARE LIMITED PARTNERSHIP, AND SEVERALLY ACKNOWLEDGED TO AND BEFORE ME THAT HE EXECUTED SUCH INSTRUMENT AS SUCH OFFICER OF SAID CORPORATION, AND THAT THE SEAL AFFIXED TO THE FOREGOING INSTRUMENT IS THE CORPORATE SEAL OF SAID CORPORATION AND THAT IT WAS AFFIXED TO SAID INSTRUMENT BY DUE AND REGULAR CORPORATE AUTHORITY, AND THAT SAID INSTRUMENT IS THE FREE ACT AND DEED OF SAID CORPORATION ON BEHALF OF SAID PARTNERSHIP.

WITNESS MY HAND AND OFFICIAL SEAL THIS \_\_\_\_\_ DAY OF \_\_\_\_\_, 1995.

MY COMMISSION EXPIRES: \_\_\_\_\_ DATE \_\_\_\_\_ NOTARY PUBLIC

THIS INSTRUMENT WAS PREPARED BY MARY HANNA CLODFELTER, P.L.S., IN THE OFFICES OF MOCK, ROOS & ASSOCIATES, INC., 5720 CORPORATE WAY, WEST PALM BEACH, FLORIDA 33407.

PET. 87-112  
ALOC #0001  
5/2/2/I

ALL DISTANCES ARE GROUND.  
SCALE FACTOR - 1.000532

MOCK, ROOS & ASSOCIATES, INC.  
5720 CORPORATE WAY, WEST PALM BEACH, FL. 33407 (407) 683-3113

SCALE: 1" = 40'  
DATE: NOVEMBER 1994  
P. A. NO. 94156.00 DWG. NO. 45-42-03-15  
WINSTON TRAILS PARCEL SIX  
PART OF WINSTON TRAILS, P. U. D.  
SECT. 2 & 3, TOWNSHIP 45 SOUTH, RANGE 42 EAST

0587-014

70  
5/2/95  
100-107  
100-108  
100-109  
100-110  
100-111  
100-112  
100-113  
100-114  
100-115  
100-116  
100-117  
100-118  
100-119  
100-120  
100-121  
100-122  
100-123  
100-124  
100-125  
100-126  
100-127  
100-128  
100-129  
100-130  
100-131  
100-132  
100-133  
100-134  
100-135  
100-136  
100-137  
100-138  
100-139  
100-140  
100-141  
100-142  
100-143  
100-144  
100-145  
100-146  
100-147  
100-148  
100-149  
100-150  
100-151  
100-152  
100-153  
100-154  
100-155  
100-156  
100-157  
100-158  
100-159  
100-160  
100-161  
100-162  
100-163  
100-164  
100-165  
100-166  
100-167  
100-168  
100-169  
100-170  
100-171  
100-172  
100-173  
100-174  
100-175  
100-176  
100-177  
100-178  
100-179  
100-180  
100-181  
100-182  
100-183  
100-184  
100-185  
100-186  
100-187  
100-188  
100-189  
100-190  
100-191  
100-192  
100-193  
100-194  
100-195  
100-196  
100-197  
100-198  
100-199  
100-200

Rev. 5-20-95  
Rev. 5-04-95  
Rev. 3-08-95  
CADD FILE  
WINTP14